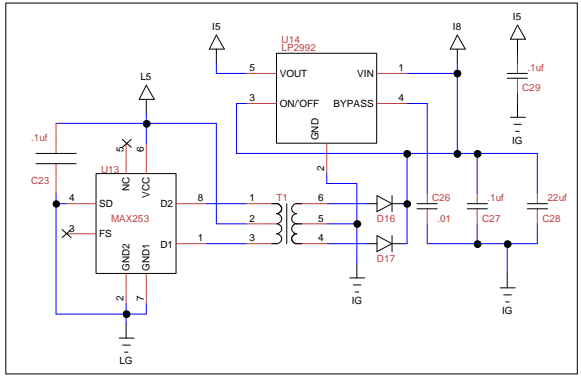


**ISOLATED POWER SUPPLY**



**RS485 Terminations**  
 J5 - RX Termination, 120 ohm  
 J6 - TX Termination, 120 ohm  
 J7 - TX Bias High, 560 ohm  
 J8 - TX Bias Low, 560 ohm

**RJ11 Power Options**  
 No Jumpers, Full Isolation  
 J9, J10 Power UNIC from RJ11

Title UNIC- RS485		
Author Les Hildenbrandt Standard Parking Systems		
File	E:\SPSUNIC\unic20.dsn	
Revision 1.4B	Date 6/19/2007	Document Sheets 2 of 4